



Professor Louis Appleby

Director, National Confidential
Inquiry

Chair, National Suicide Prevention
Strategy (England)



HM Government

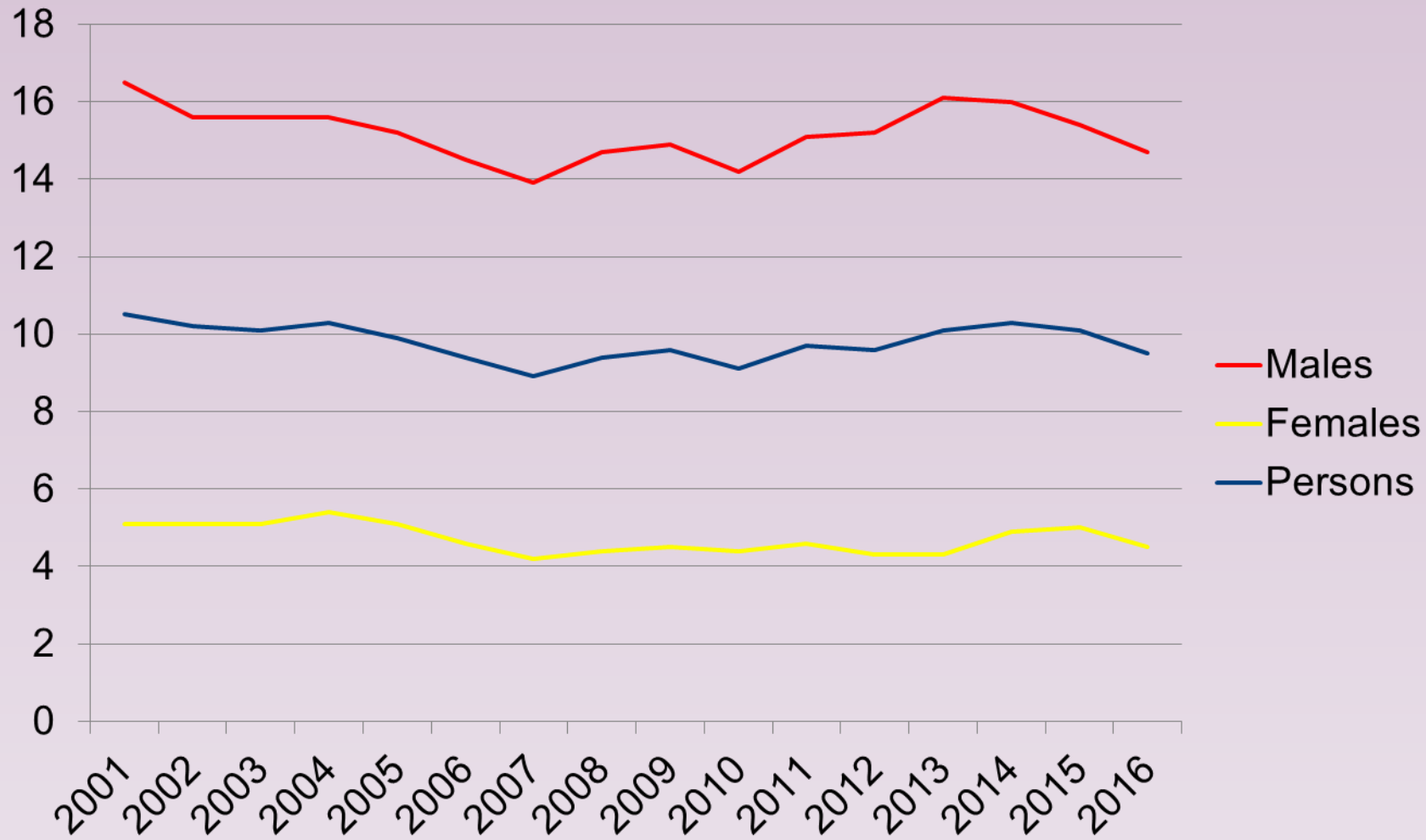
Preventing suicide in England:

Third progress report of the cross-government outcomes strategy to save lives

January 2017

- **Local suicide prevention plans**
- **Self-harm**
- **Middle-aged men, mental health patients, prisoners**
- **Better data**
- **Bereavement support**

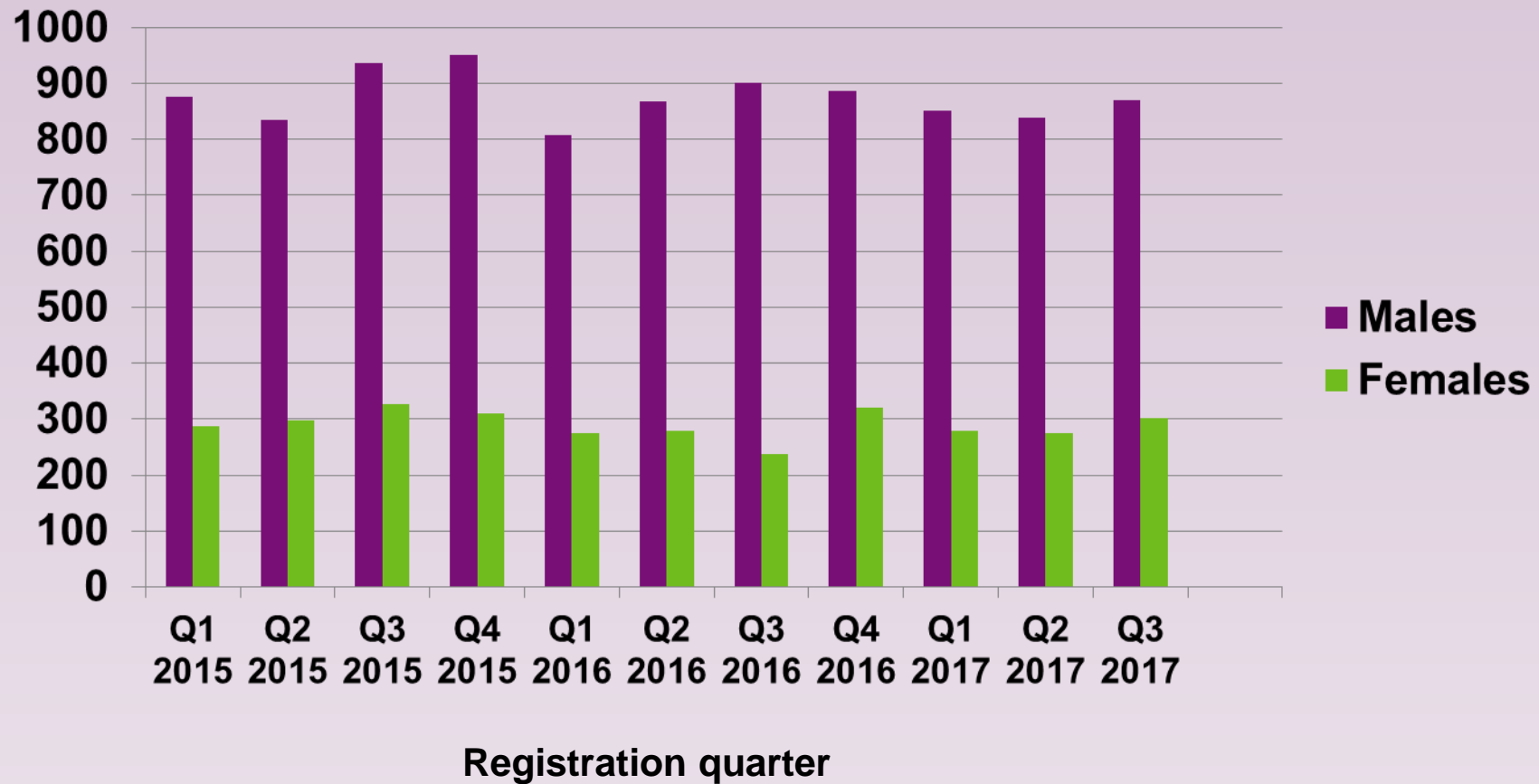
Age-standardised suicide rates, England 2001-2016



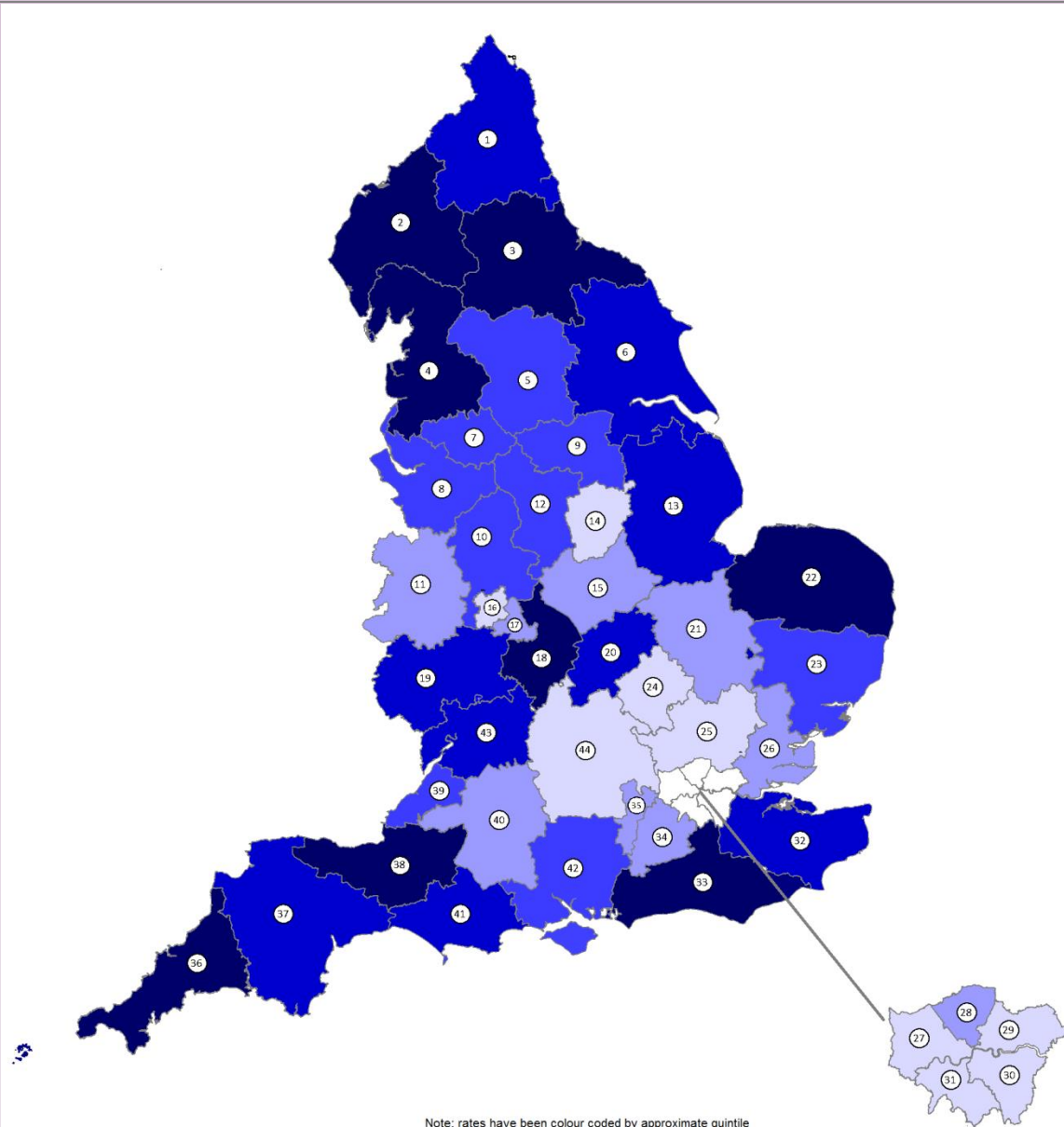
Source: ONS

Provisional quarterly data up to Q3 2017

Number of suicides

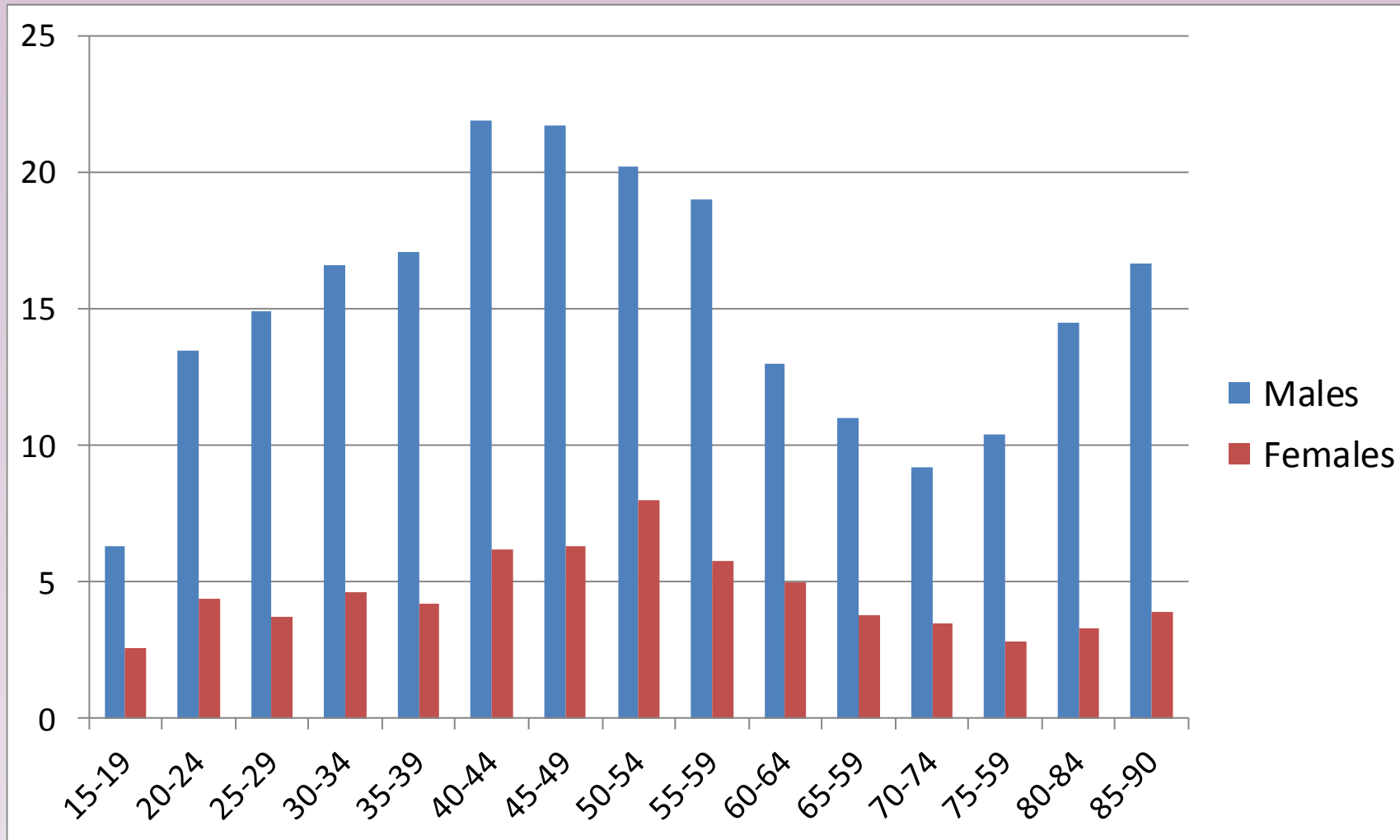


Suicide rates in STP 'footprint' areas (2013-2015)



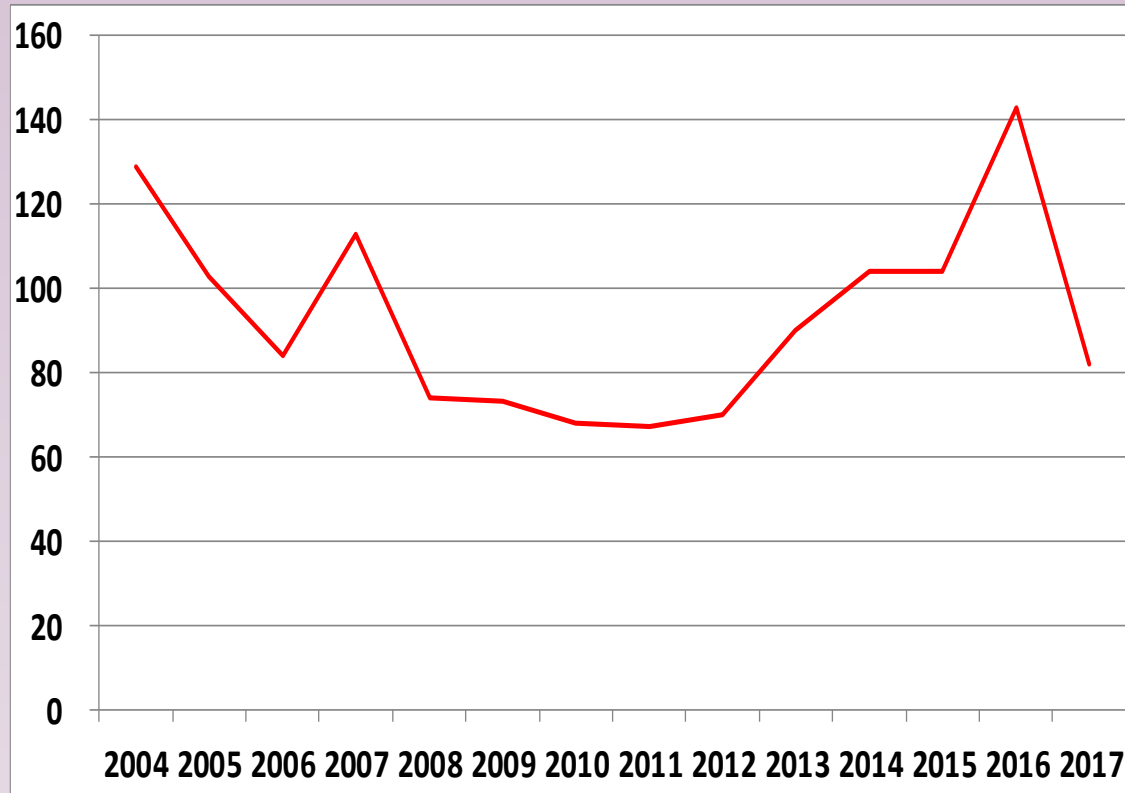
- Variation by geography
- Highest rates in north & south-west
- Lowest rates in London & south-central areas
- High rates also in rural areas

Age-specific suicide rate, 2016, England



Source: ONS

Self-inflicted deaths in prison custody, England & Wales

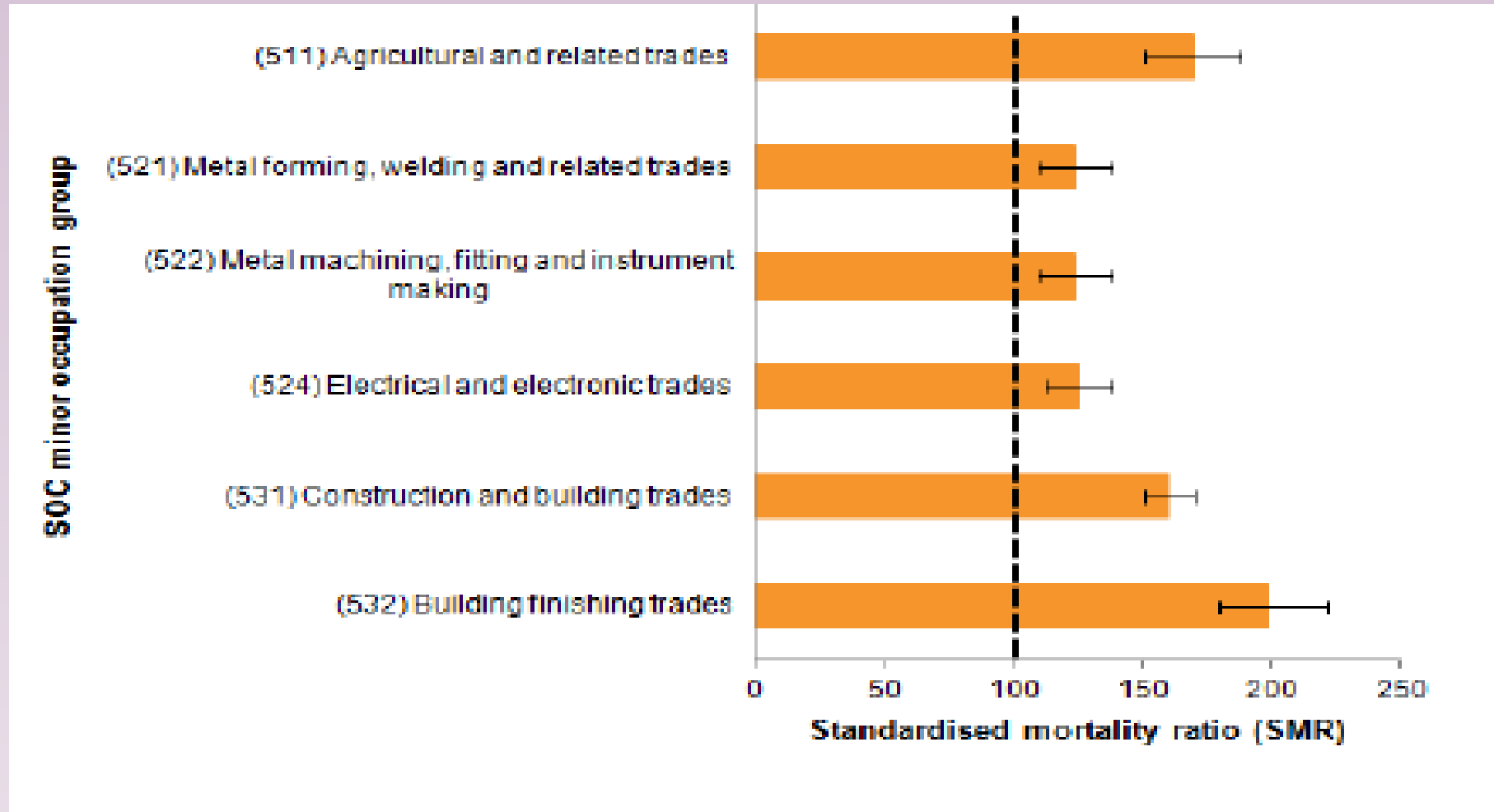


Rates per 100,000 prisoners

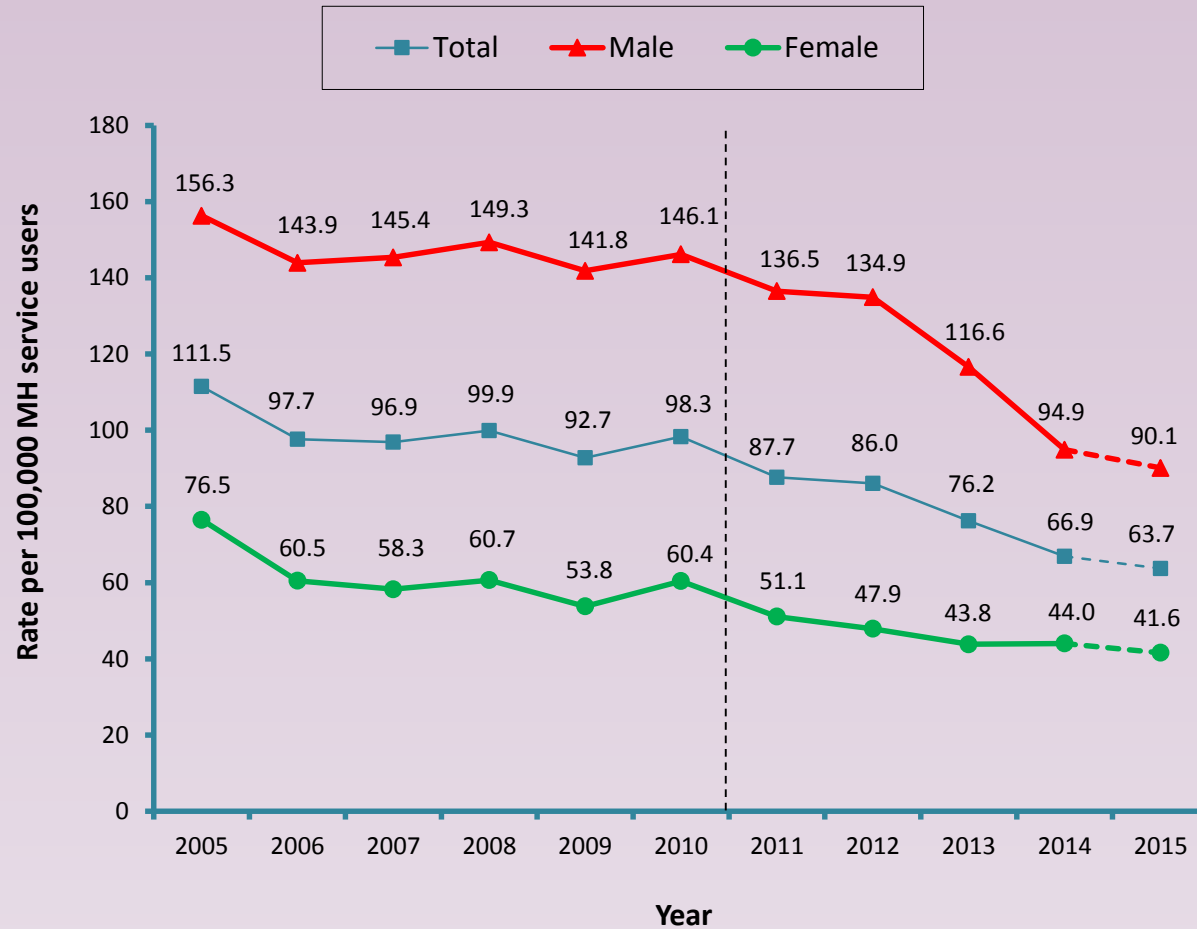
Source: MoJ

- **Figures doubled 2012-2016**
- **70 deaths 2017 down from 122 in 2016**

Occupations with high suicide risk (males)



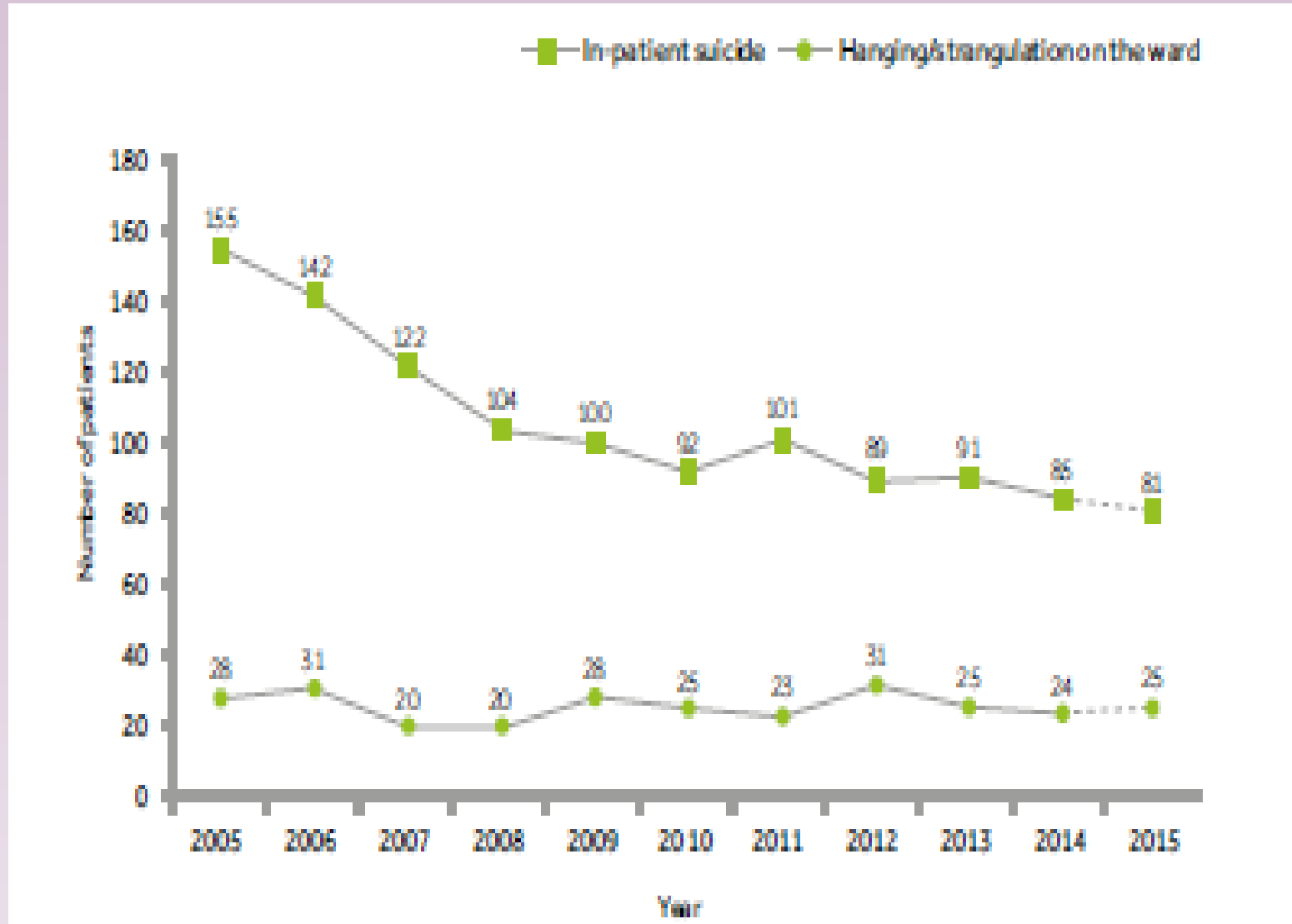
Patient suicide rates, England



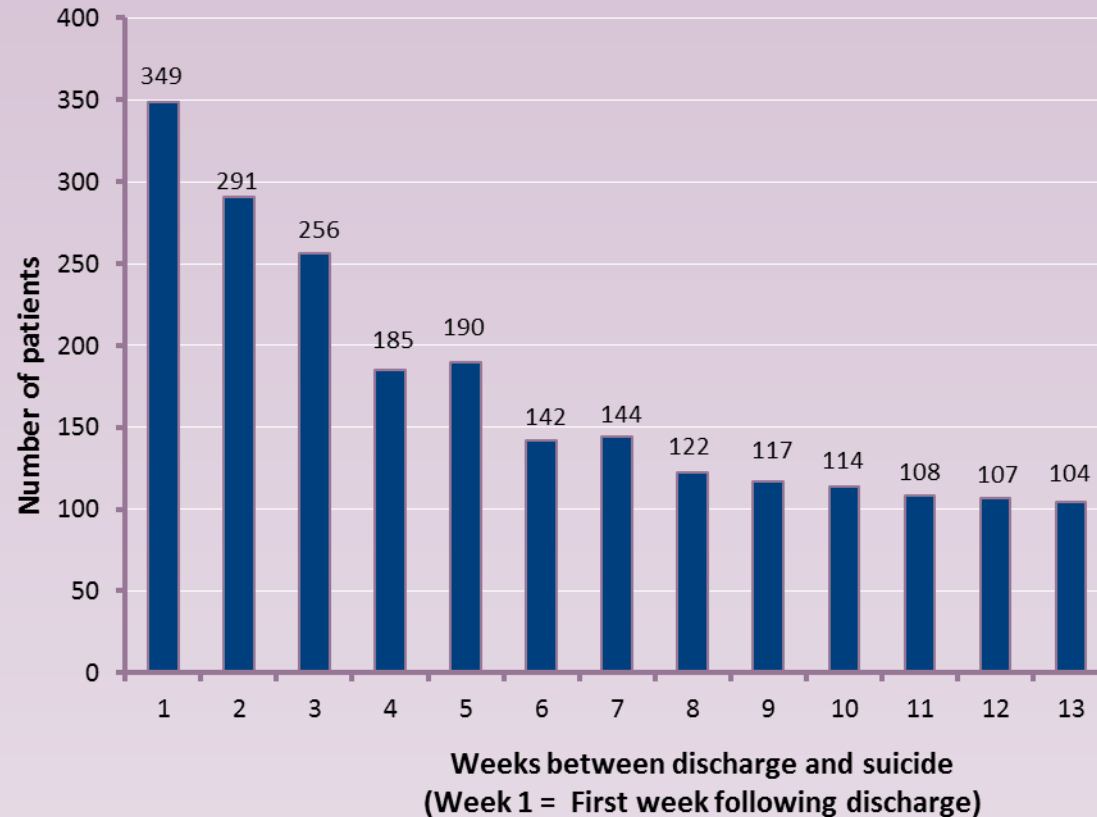
- **Falling rates but problem estimating patient numbers**

- **Changing clinical population**

In-patient suicides, 2005-15, England



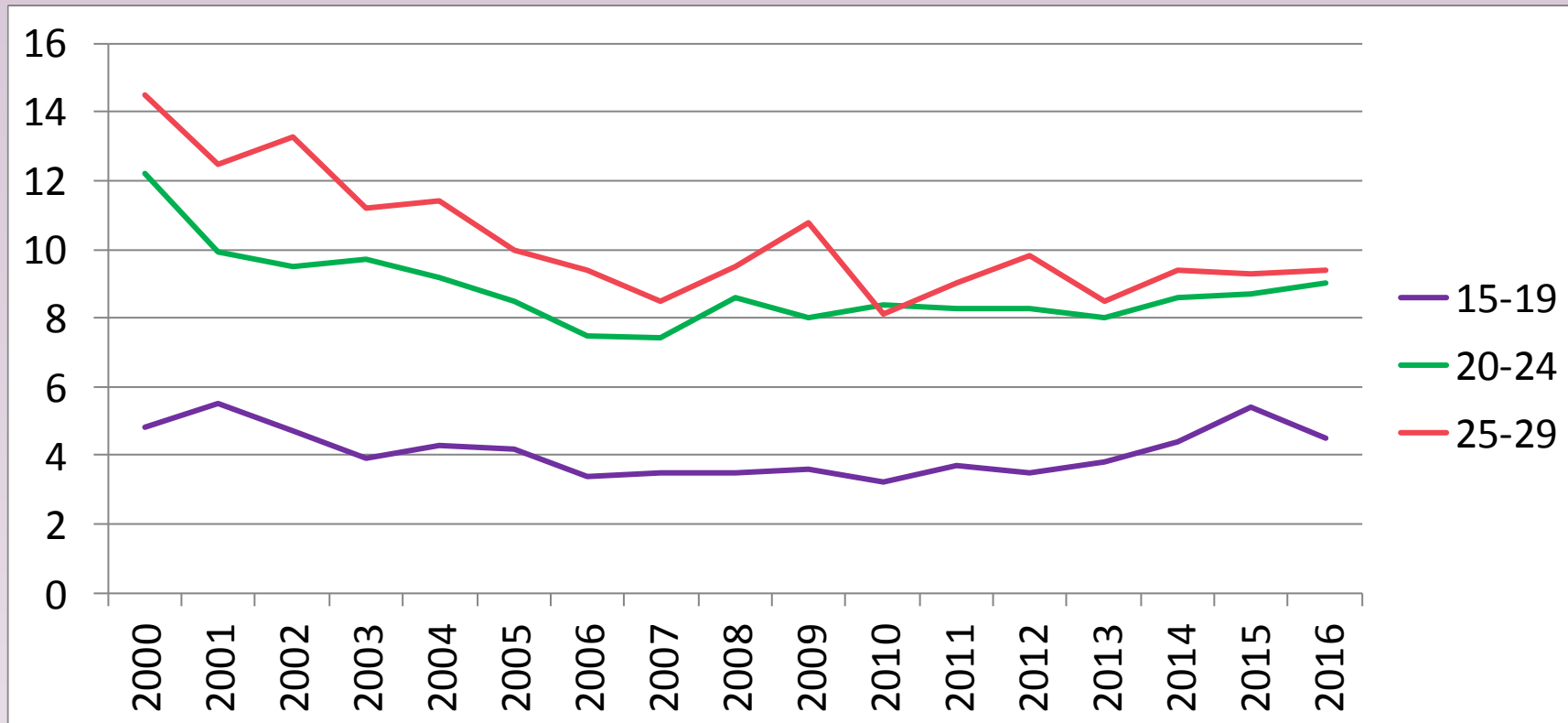
Suicides per week after discharge, England



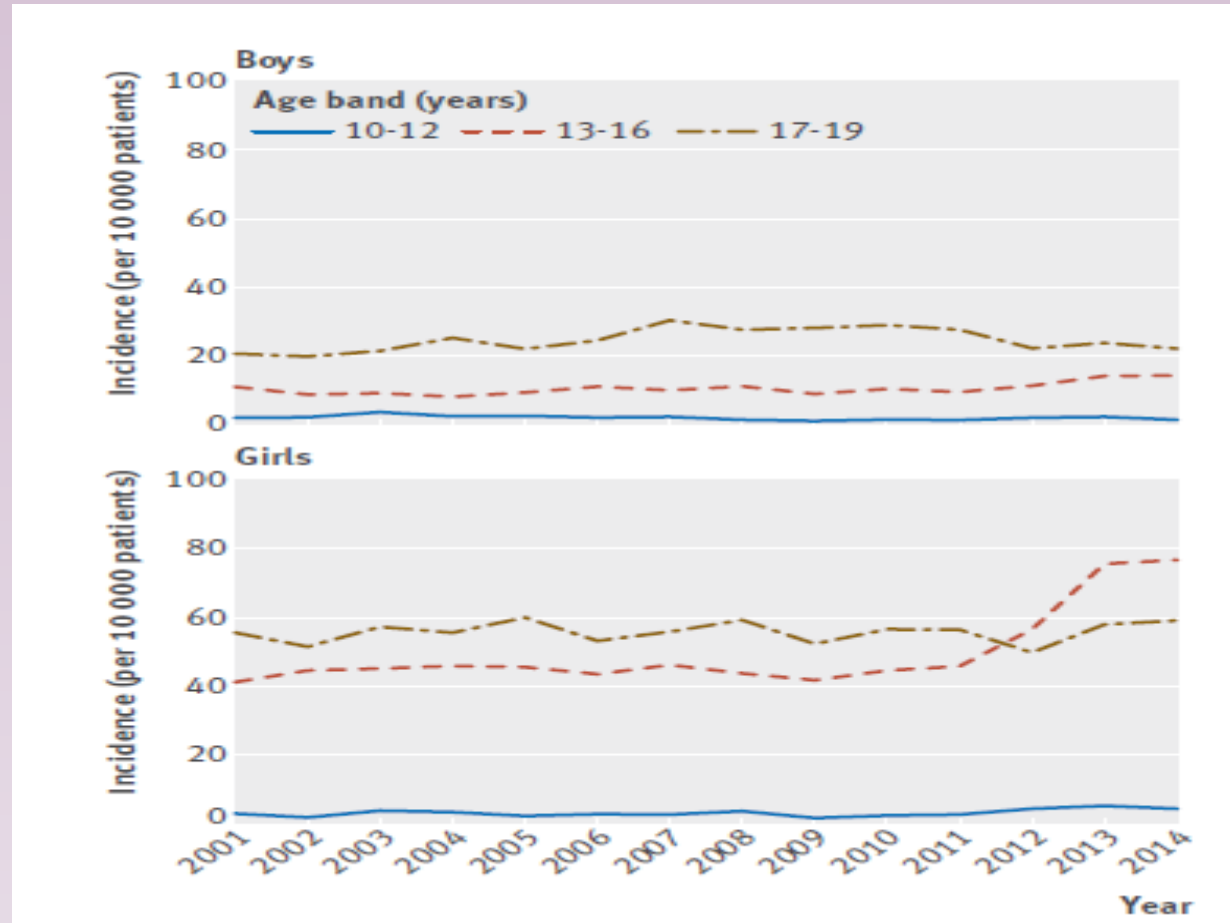
- Peak risk in first 2 weeks
- Link to short admission, care plan, life events

Suicide rates in young people, 2000-16

England



Self-harm presentations in hospital



Source: Morgan, Webb, Carr et al, BMJ, 2017

Incidence of fatal and non-fatal self-harm by age group and sex

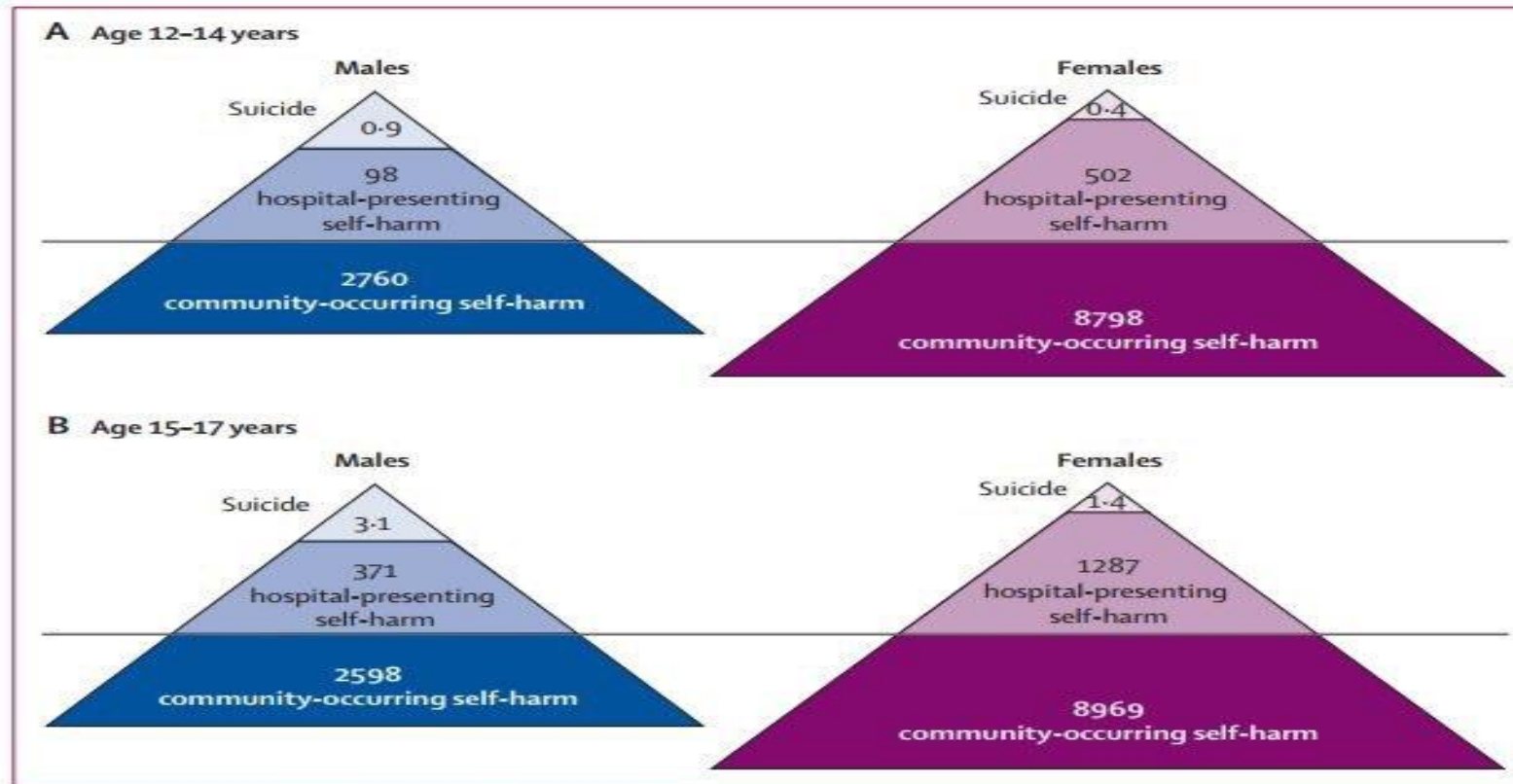
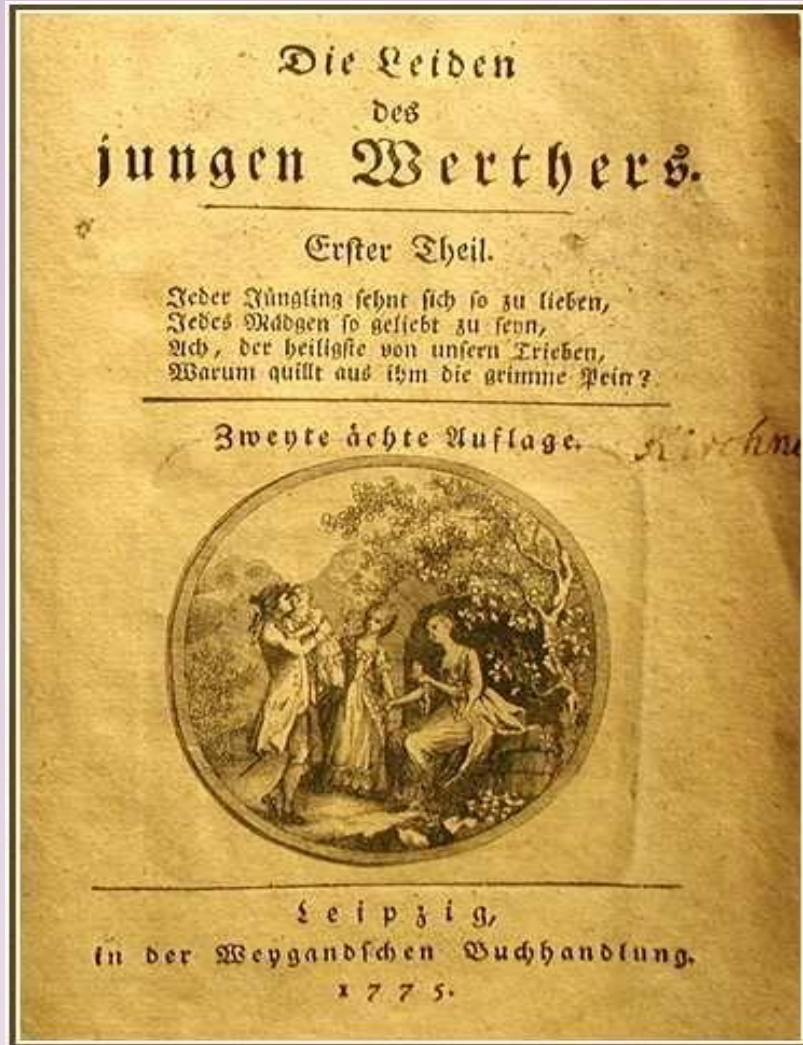
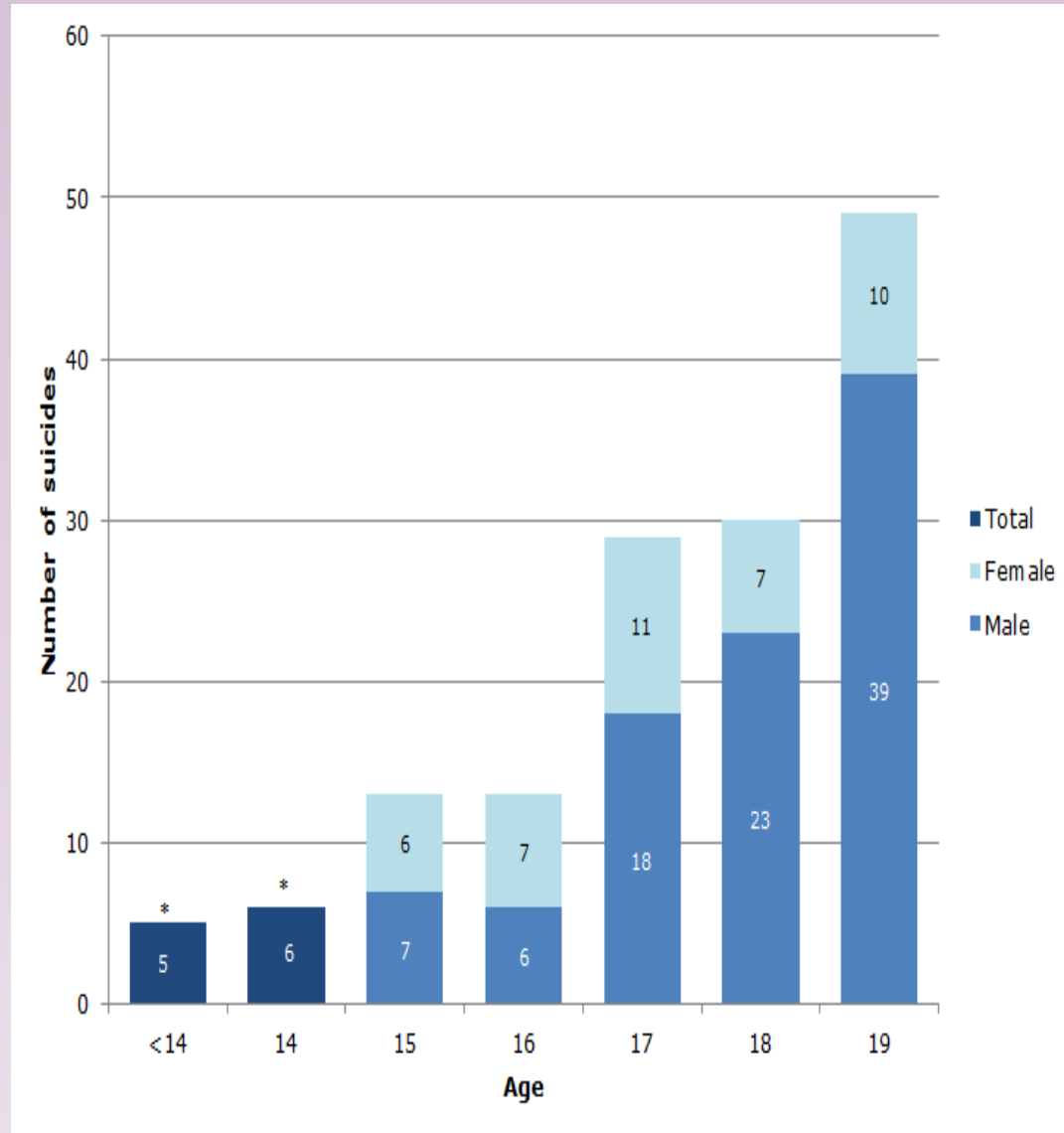


Figure 1: Incidence of fatal and non-fatal self-harm per 100 000 person-years by age group and sex
 (A) Age 12–14 years. Rate ratio of suicide to hospital self-harm and to community self-harm: 1:109:3067 for males and 1:1255:21 995 for females. Rate ratio of hospital self-harm to community self-harm: 1:28 for males and 1:18 for females. (B) Age 15–17 years. Rate ratio of suicide to hospital self-harm to community self-harm: 1:120:838 for males and 1:919:6406 for females. Rate ratio of hospital self-harm to community self-harm: 1:7 for males and 1:7 for females. The horizontal line represents the division between overt behaviour (suicide and hospital-presenting self-harm) and covert behaviour (non-fatal self-harm occurring in the community, which often does not come to the attention of clinical services).

Suicide and the media



National study of teenage suicide



Source: The Lancet Psychiatry, Rodway et al, 2016


- **Linked to suicide bereavement, isolation, exams**
- **Suicide-related internet use in 23%**
- **No service contact in 43%**

Do suicides happen “out of the blue”?

MANCHESTER
1824
The University of Manchester

HQIP
Healthcare Quality
Improvement Partnership

Suicide by Children and Young People



National Confidential Inquiry into Suicide and
Homicide by People with Mental Illness

July 2017

- 1/3 had reported no suicidal ideas
- Also had lower rate of risk factors
- And 70% had no service contacts