



Professor Louis Appleby

Director, National Confidential
Inquiry

Chair, National Suicide Prevention
Strategy (England)



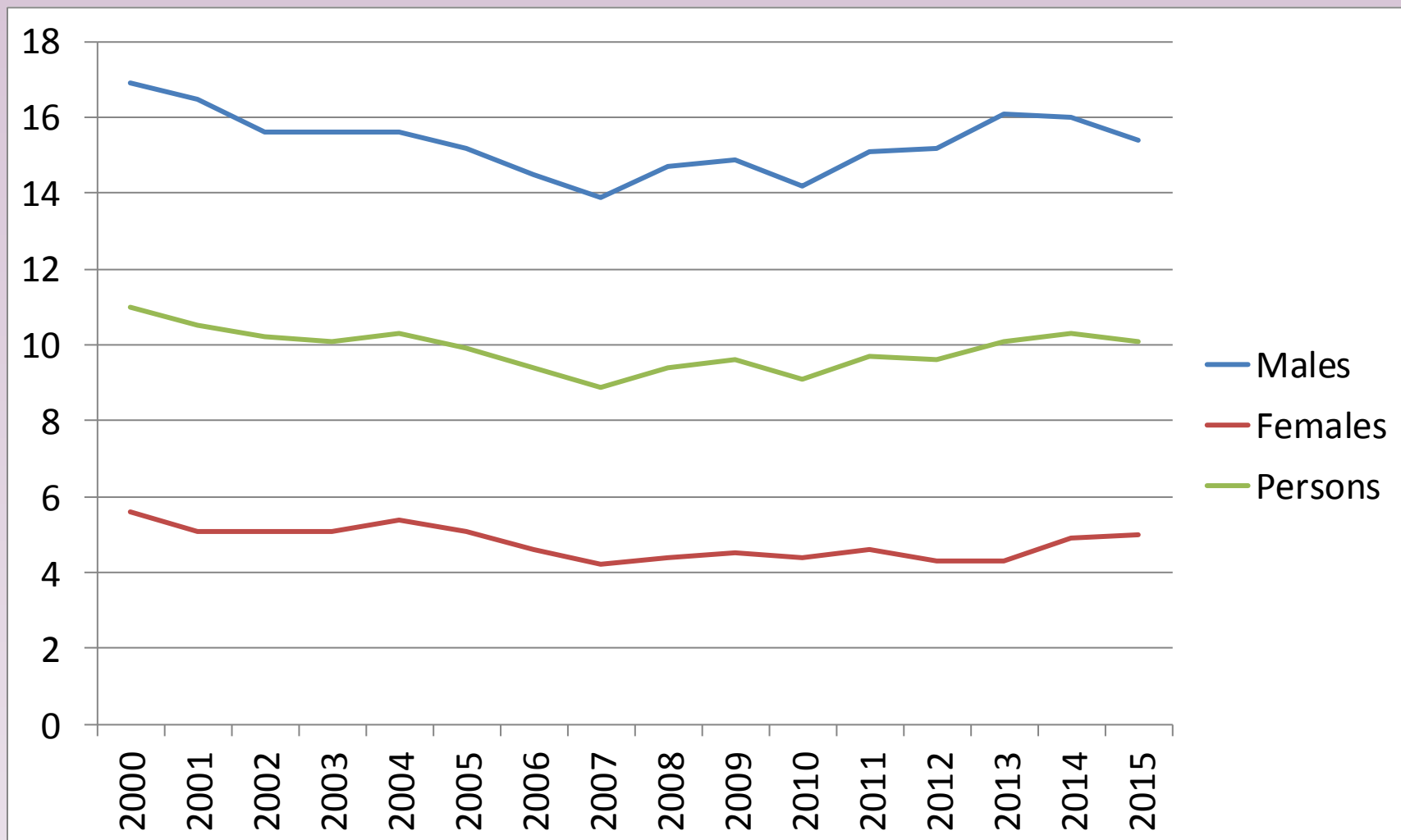
HM Government

Preventing suicide in England:

Third progress report of the cross-government outcomes strategy to save lives

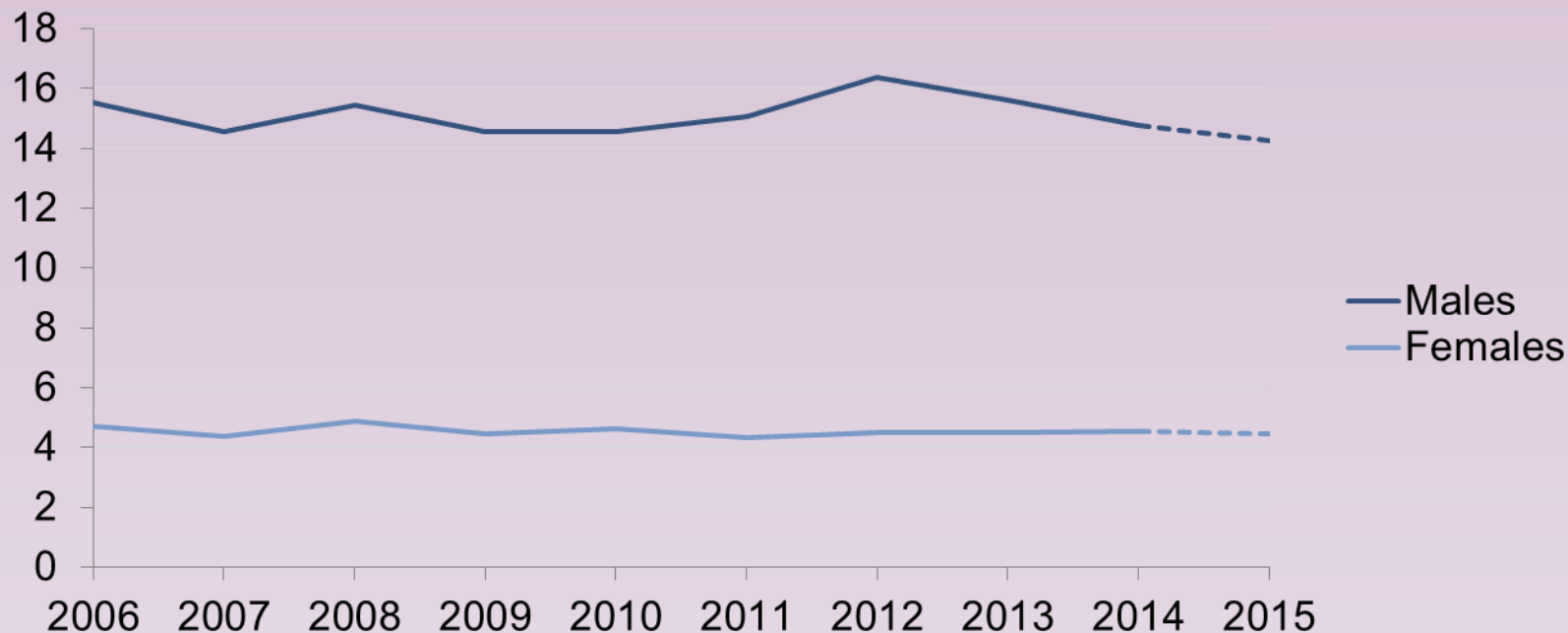
- **Local suicide prevention plans**
- **Self-harm**
- **Middle-aged men, mental health patients, prisoners**
- **Better data**
- **Bereavement support**

Age-standardised suicide rates, England 2000-2015



Suicide rates by year of occurrence

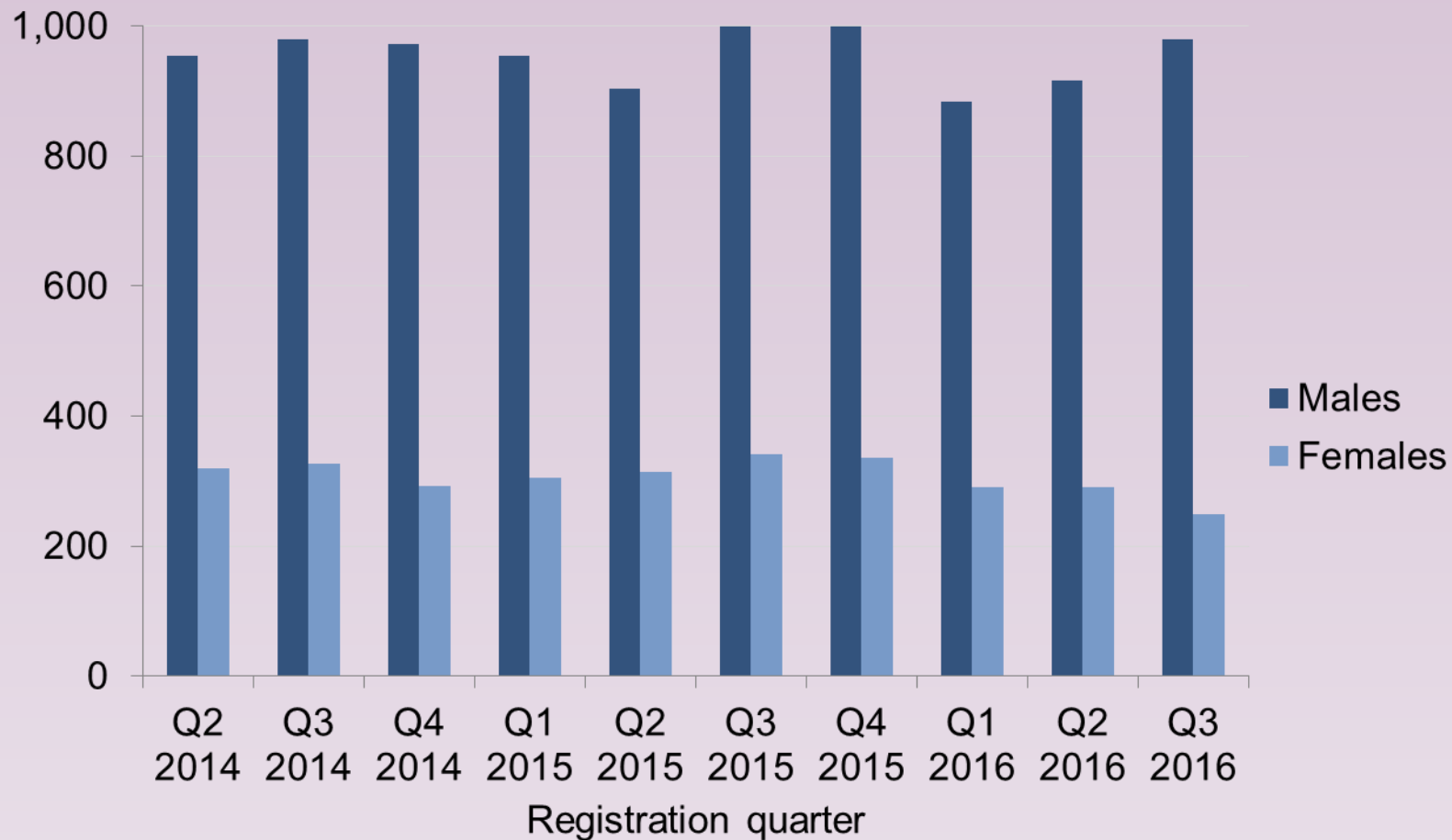
Age-standardised suicide rate per 100,000



1. **Suicides in England.**
2. **By year of occurrence (deaths registered by 30 September 2016).**
3. **Due to late registrations, data for 2015 will be incomplete.**

Provisional quarterly data for 2016

Number of suicides





House of Commons
Health Committee

Suicide prevention: interim report

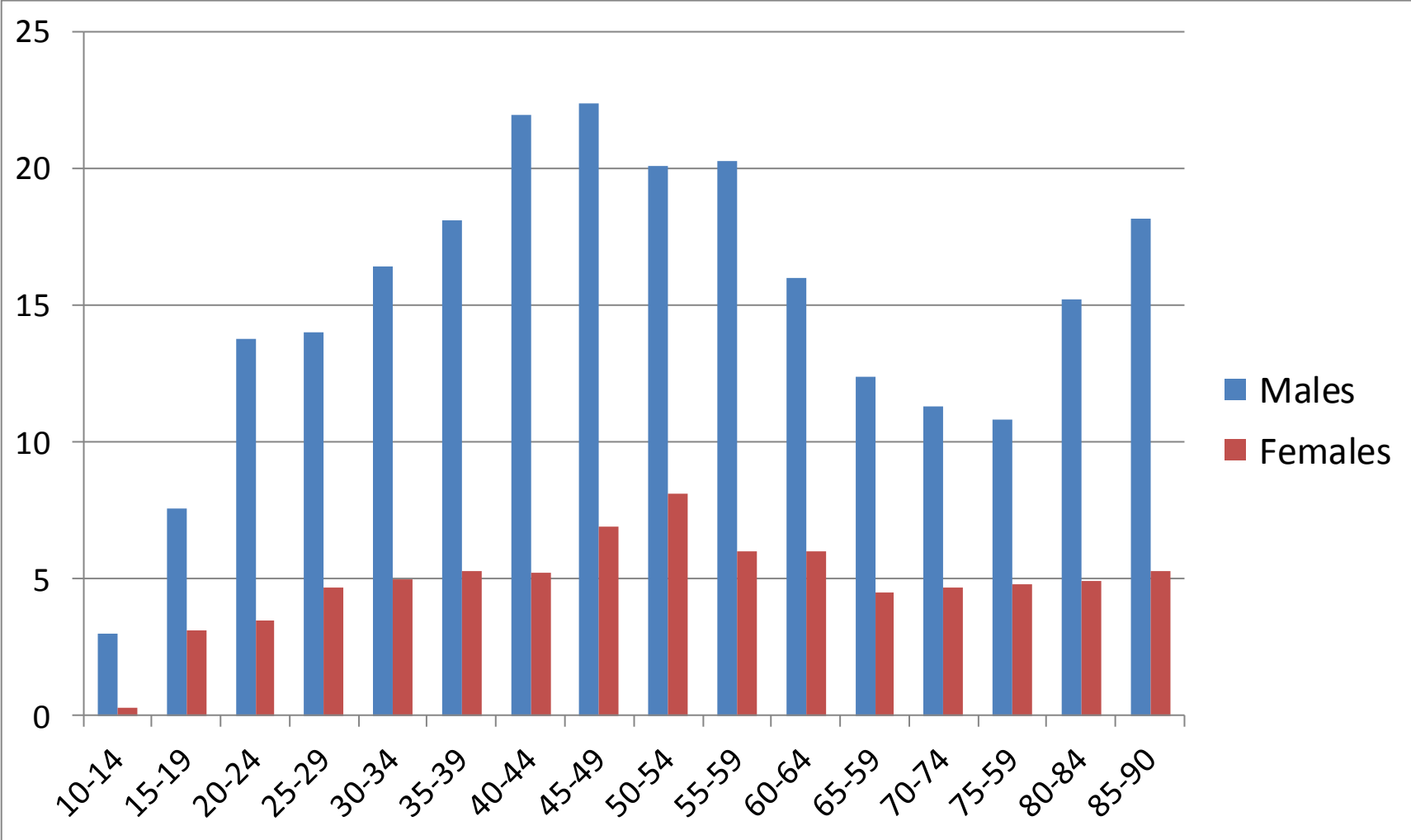
Fourth Report of Session 2016–17

*Report, together with formal minutes
relating to the report*

*Ordered by the House of Commons
to be printed 13 December 2016*

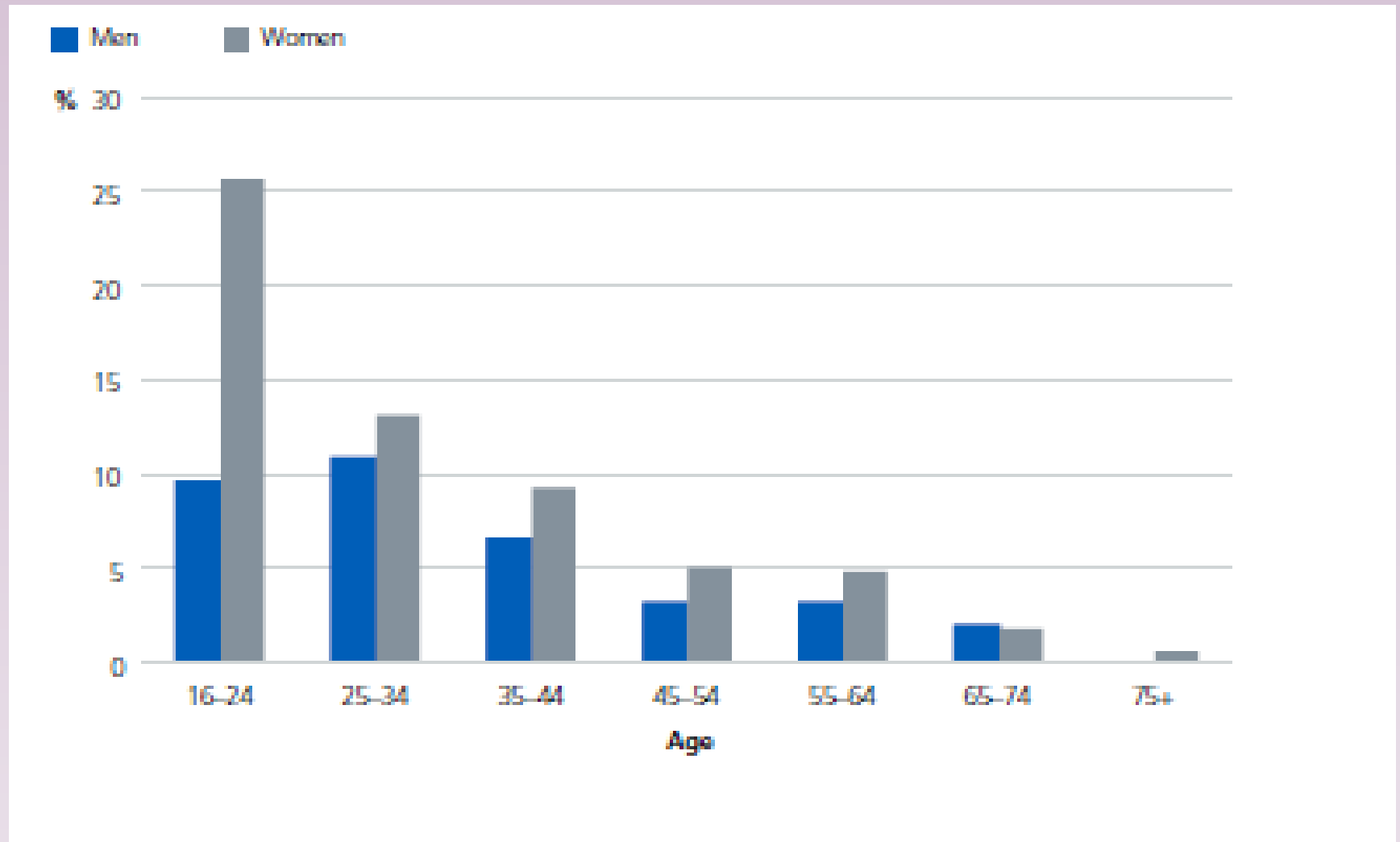
- **Implementation with external scrutiny**
- **Services: EI, non-clinical settings, bereavement support**
- **Consensus statement on information sharing**
- **Timing and consistency of data**
- **Media**

Age-specific suicide rate, 2015, England



Source: ONS

Percentage of population who report self-harm



Safer wards



**Early follow-up
on discharge**



**Dual diagnosis
service**



**No out-of-area
admissions**



**Low staff
turnover**



**24 hour
crisis teams**



**Outreach
teams**



**Family involvement
in 'learning lessons'**



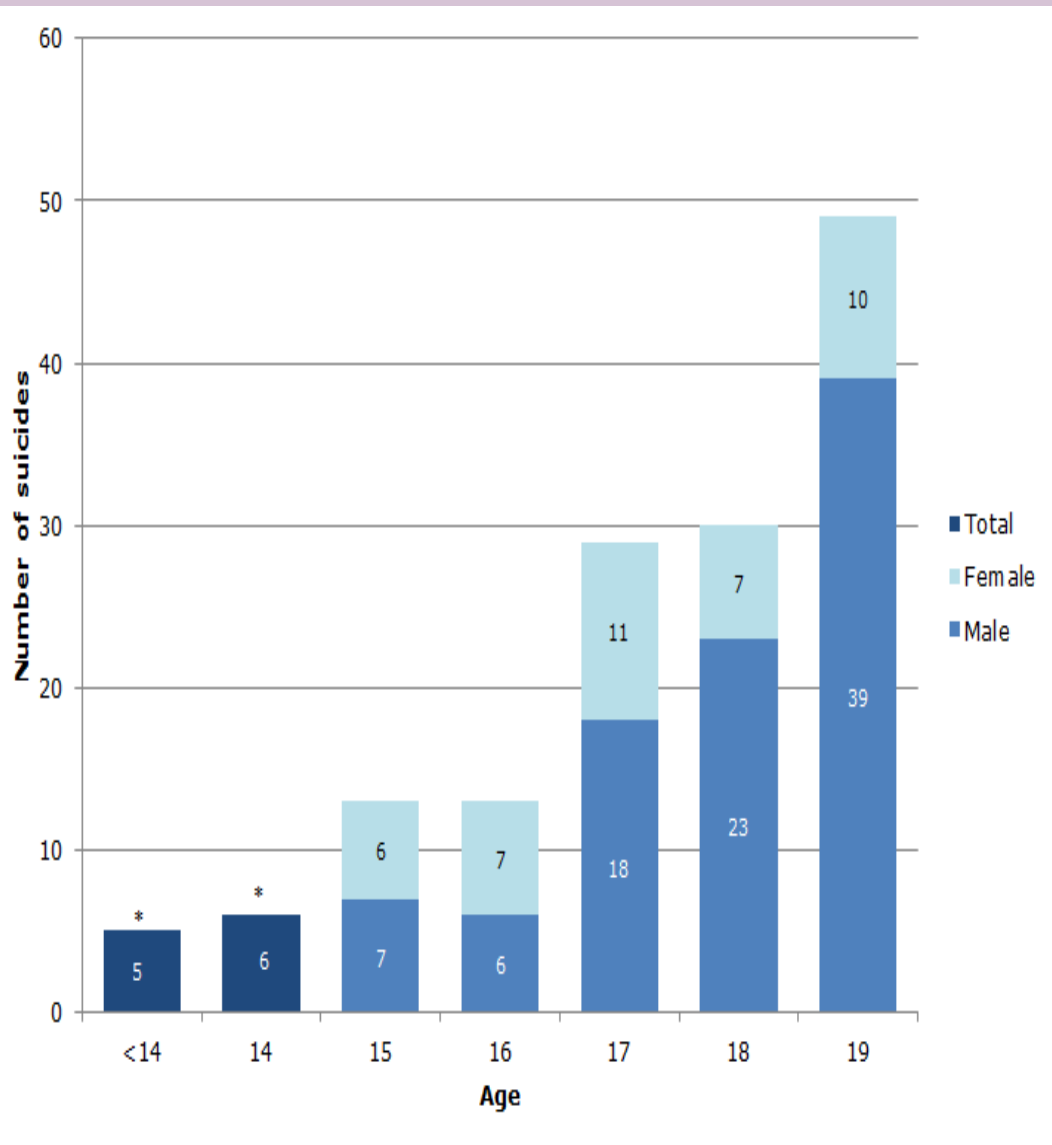
**Personalised risk
management**



Guidance on depression



National study of teenage suicide



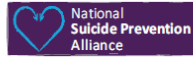
- **Linked to suicide bereavement, isolation, exams**
- **Suicide-related internet use in 23%**
- **No service contact in 43%**



Public Health
England

Protecting and improving
the nation's health

Supported by



Local suicide prevention planning

A practice resource



October 2016

Local priorities

- **Men**
- **Self-harm**
- **Acute mental health care**
- **Depression in primary care**
- **Children and young people**
- **High frequency locations**
- **Isolation**
- **Bereavement support**

Suicide prevention at hotspots



- **Barriers**
- **Helplines**
- **Intervention/patrols**
- **Local media**



Support for bereaved families



- **Help is at Hand**
- **How to commission and deliver bereavement support**
- **Consensus statement on balance of confidentiality and disclosure of risk**