

# WHEN TOM MET GERRY

- **THE BARBER**



**AND PUBLIC HEALTH**



# 15 September 2015

## Torbay and South Devon Suicide Prevention Conference

- The Coroner!
- Police
- Network Rail
- Prison Service
- Bereaved Parents
- Suicide Survivors

# DAILY TELEGRAPH

“Talk to your hairdresser”

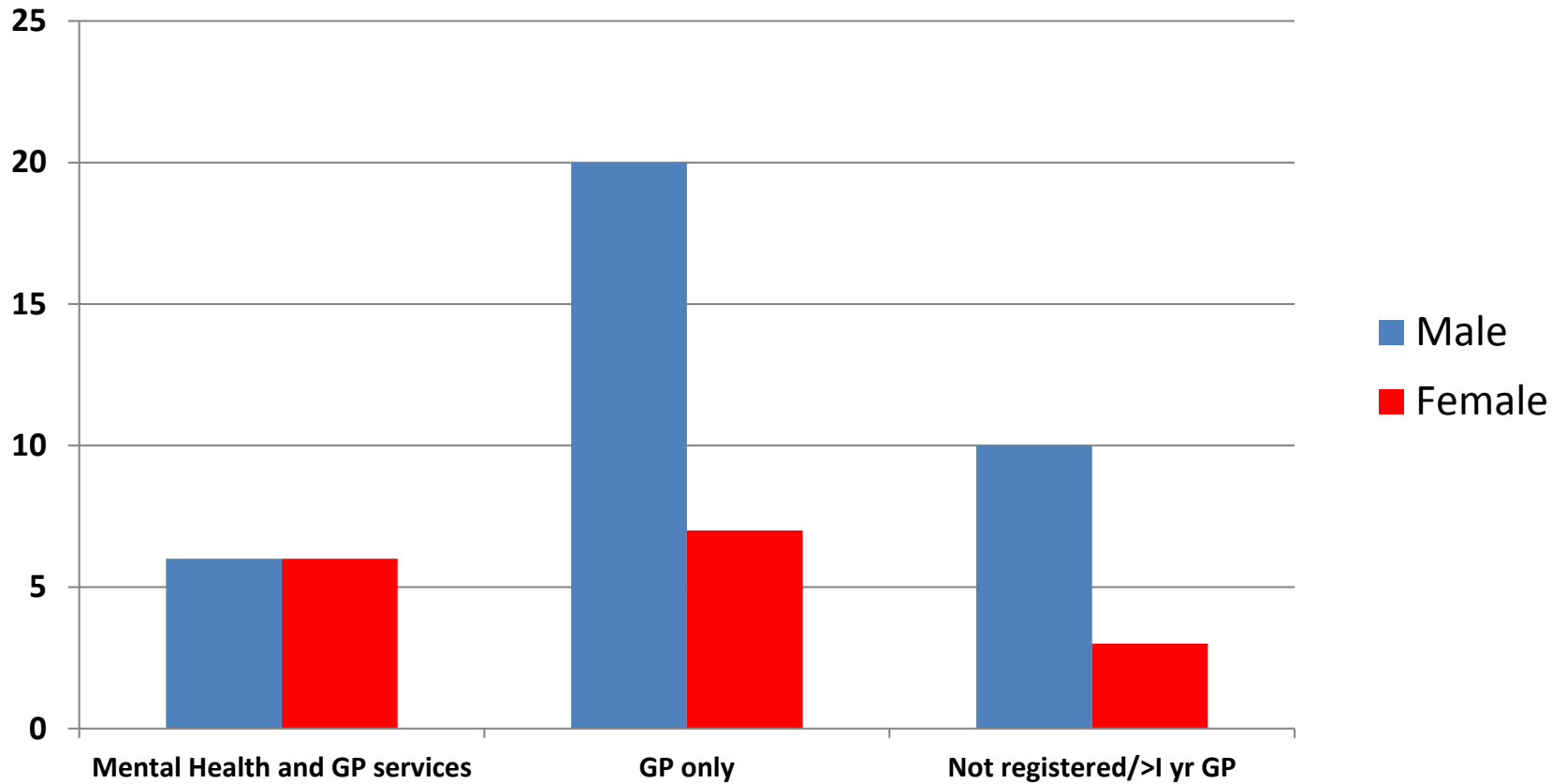
15 September 2015



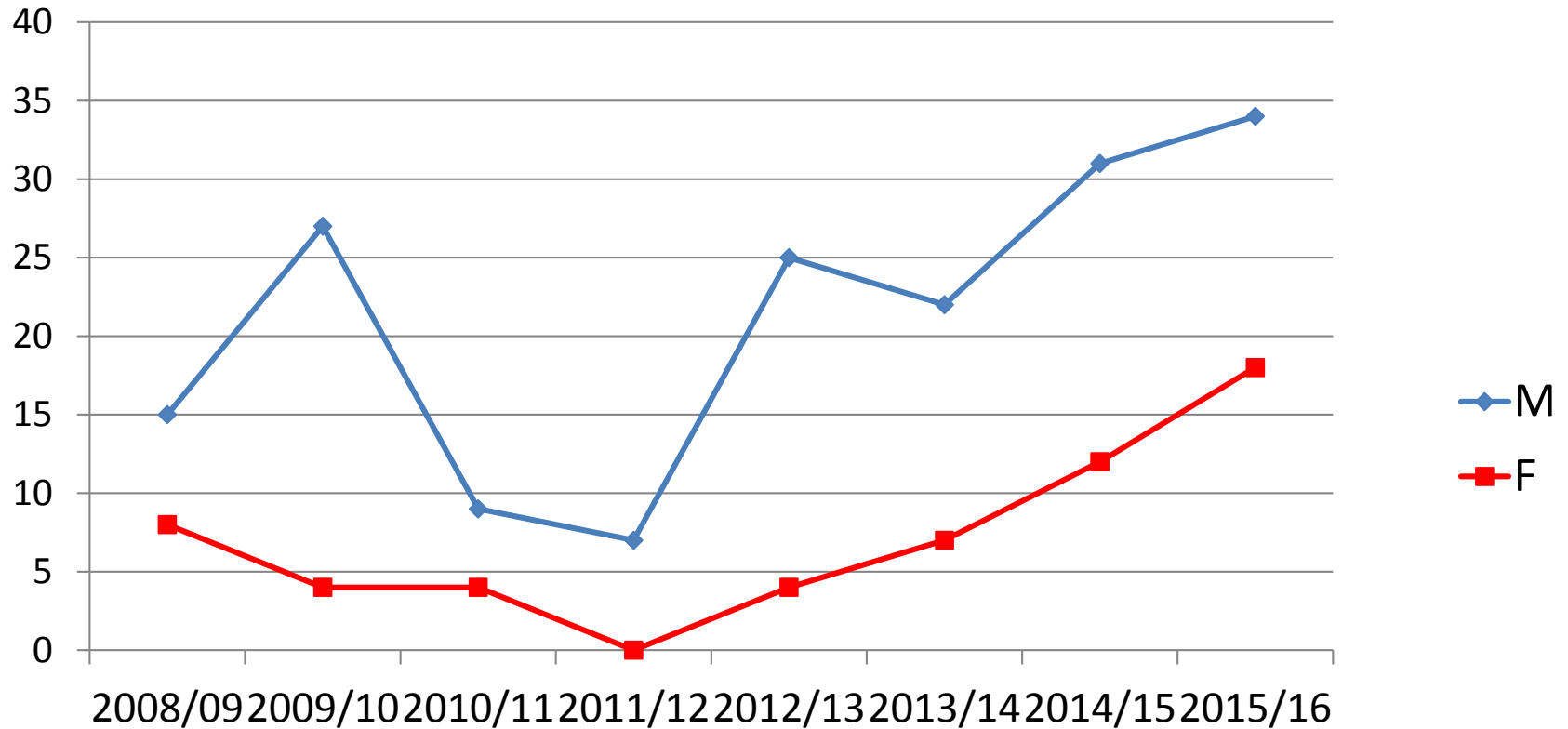
# The Public Health story

- Public Health + Minimum data set for suicide audit = Information BUT no understanding
- H.M Coroner approached and.....
- ....all the information that you ever wanted to know about Suicide but thought that you could never find out!

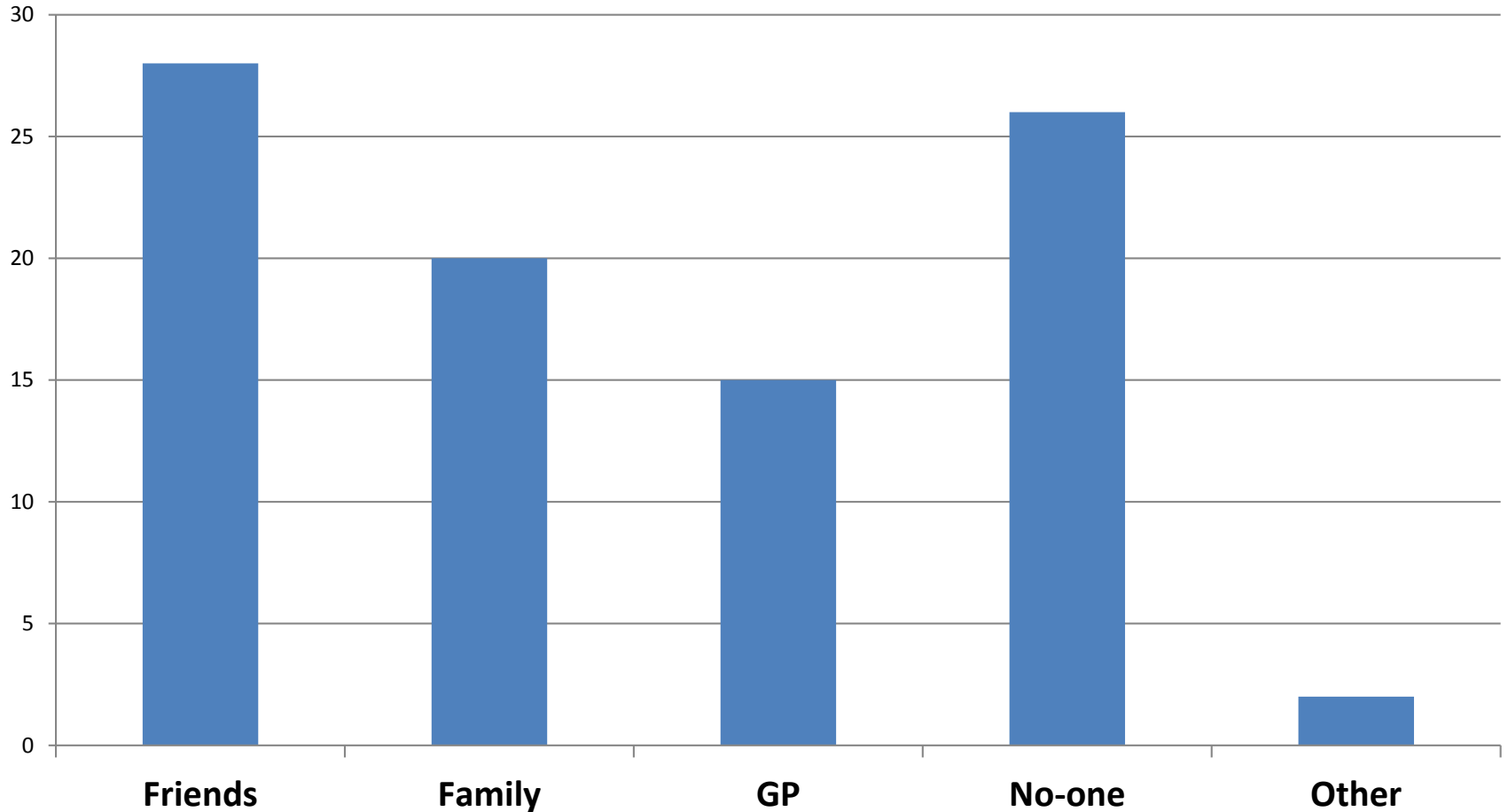
# South Devon and Torbay 2015/16



# Suicide by Gender from 2008 to 2016



# Who would you talk to if you felt hopeless?



The message?

**I AM A  
PERSON  
NOT A  
MENTAL  
HEALTH  
PROBLEM**



# Tom doing his thing



# Mental Health messages



## *Did you know that...*

---

- Men do not look after their physical OR their emotional health, and die earlier than women?

- Suicide is the biggest killer of men under 45 in the UK (Bigger than heart disease or cancer)?

- Torbay has the highest number of male suicides in the South West (higher than the England average)?

- Torbay Council and the Lions Barber Collective are working together to reduce the stigma of mental health?

**This survey was undertaken by the men's hair grooming organisation Bluebeard's  
Revenge on its website during August 2016**

**BARBER VS DOCTOR SURVEY RESULTS:**

**TOTAL RESPONDENTS: 1908 men**

- **Do you always visit the same barber/hairdresser ?**  
Yes 1492 (78.20%)                      No 416 (21.80%)
- **Do you always see the same doctor?**  
Yes 1020 (53.46%)                      No 888 (46.54%)
- **How often do you visit your barber/hairdresser annually?**  
1-5 times 552 (28.93%)  
6-10 times 624 (32.70%)  
11-20 times 536 (28.09%)  
More than 20 times 196 (10.27%)
- **How often do you visit your doctor annually?**  
1-5 times 1594 (83.54%)  
6-10 times 180 (9.43%)  
11-20 times 80 (4.19%)  
More than 20 times 54 (2.83%)
- **Who are you more likely to discuss private, sensitive matters with?**  
Barber 1011 (52.98%)  
Doctor 897 (47.1%)

# Trustees



# How can this occur in other areas?

- What are the advantages?
- What are the disadvantages?
- Does public health have to be involved?
- How cost-effective is it?
- Where do you start?
- How do you make this sustainable?
- What are the key points that **MUST** be adhered to in a project like this?